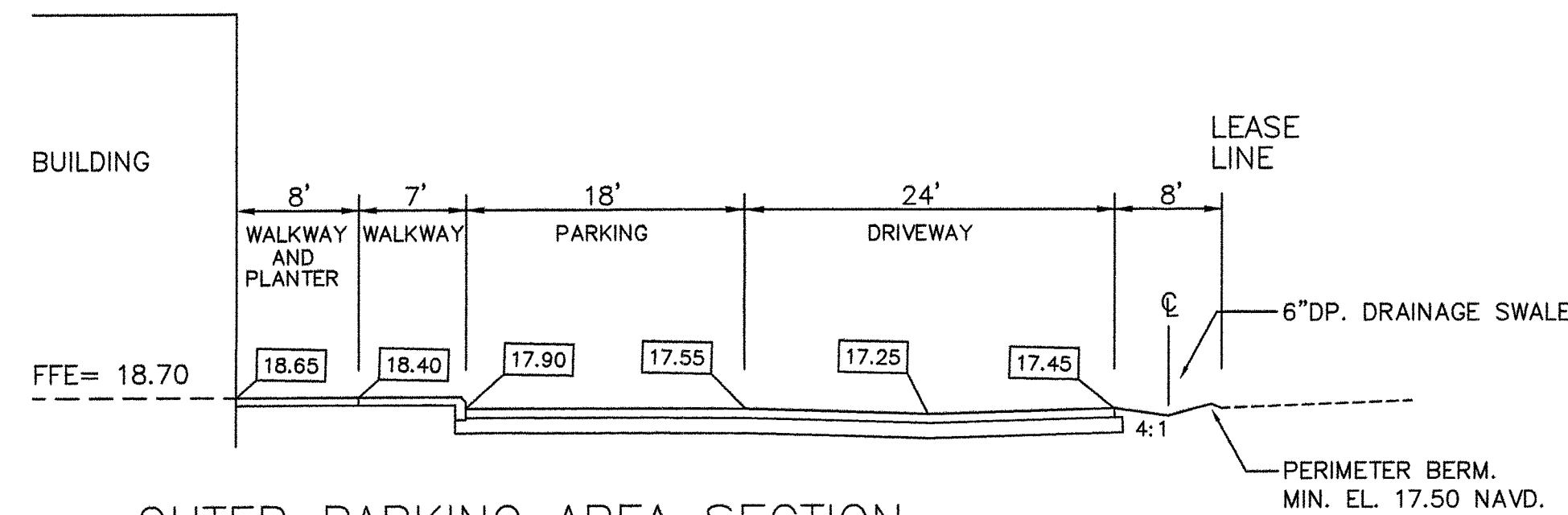
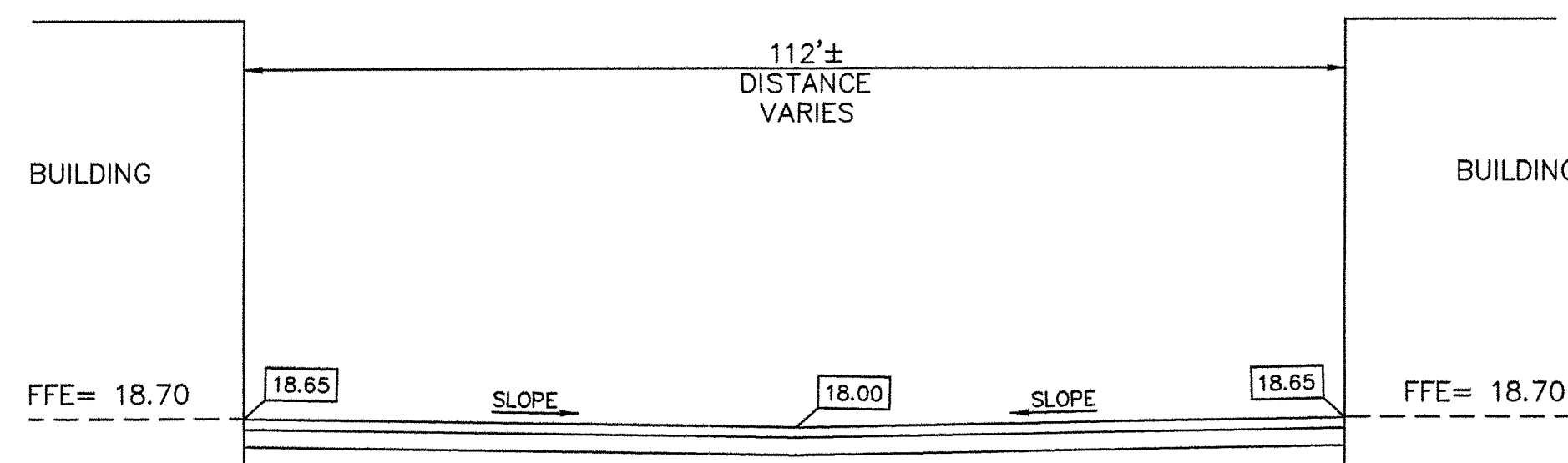


TYP. PERIM. SWALE SECTION
SCALE: N.T.S.

RETENTION AREA, SECTION
SCALE: N.T.S.

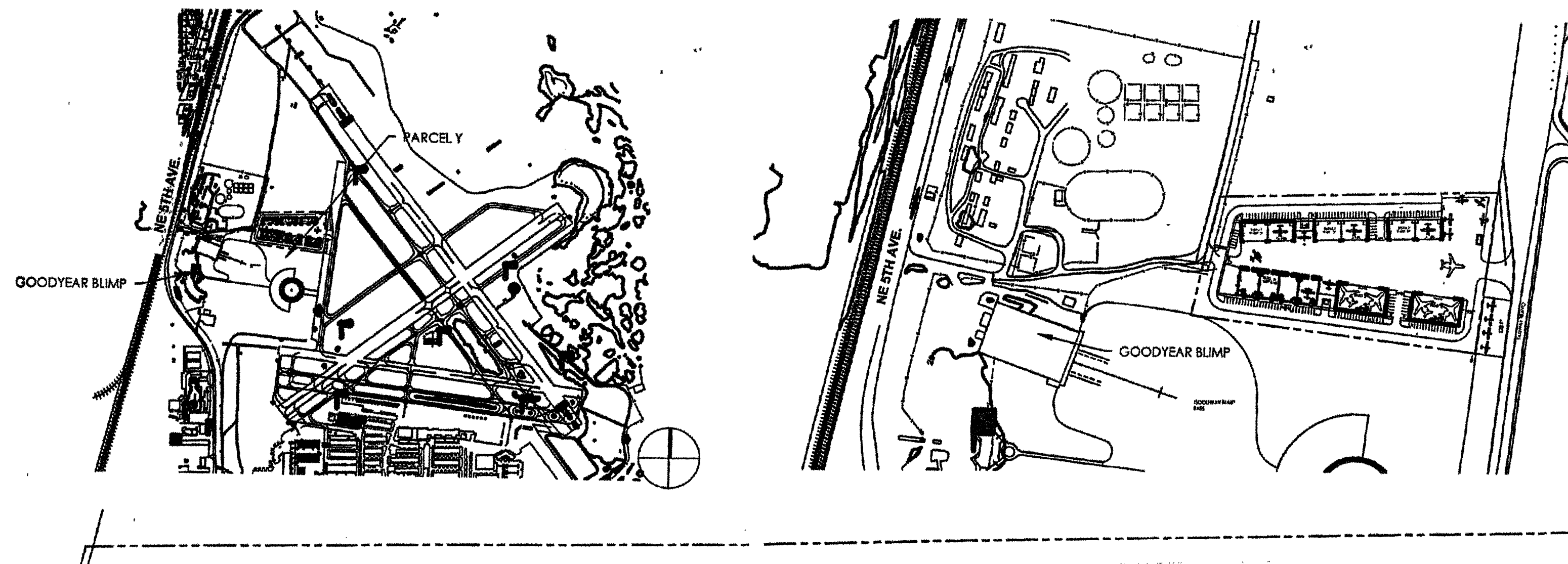


OUTER PARKING AREA SECTION
SCALE: N.T.S. NORTH & SOUTH

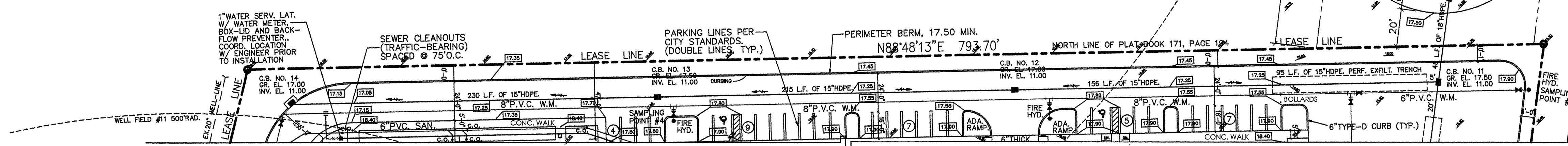


OUTER PARKING AREA SECTION
SCALE: N.T.S. EAST & WEST

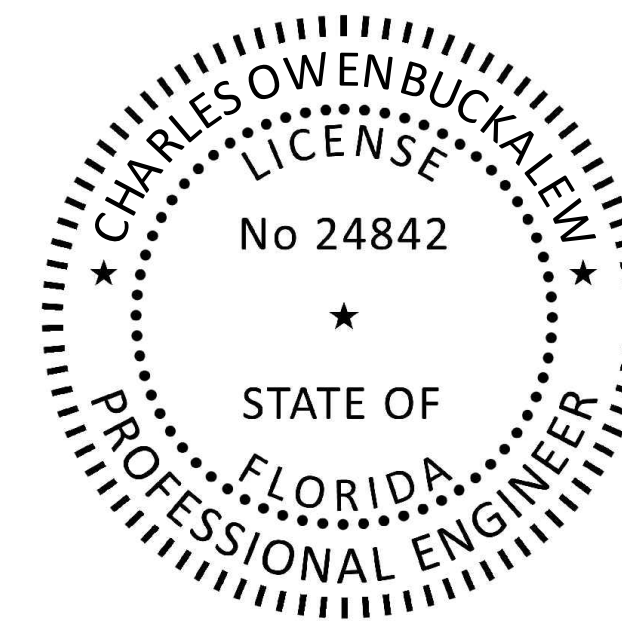
INTERIOR PARKING AREA SECTION
SCALE: N.T.S. NORTH & SOUTH INNER PARKING AREAS.



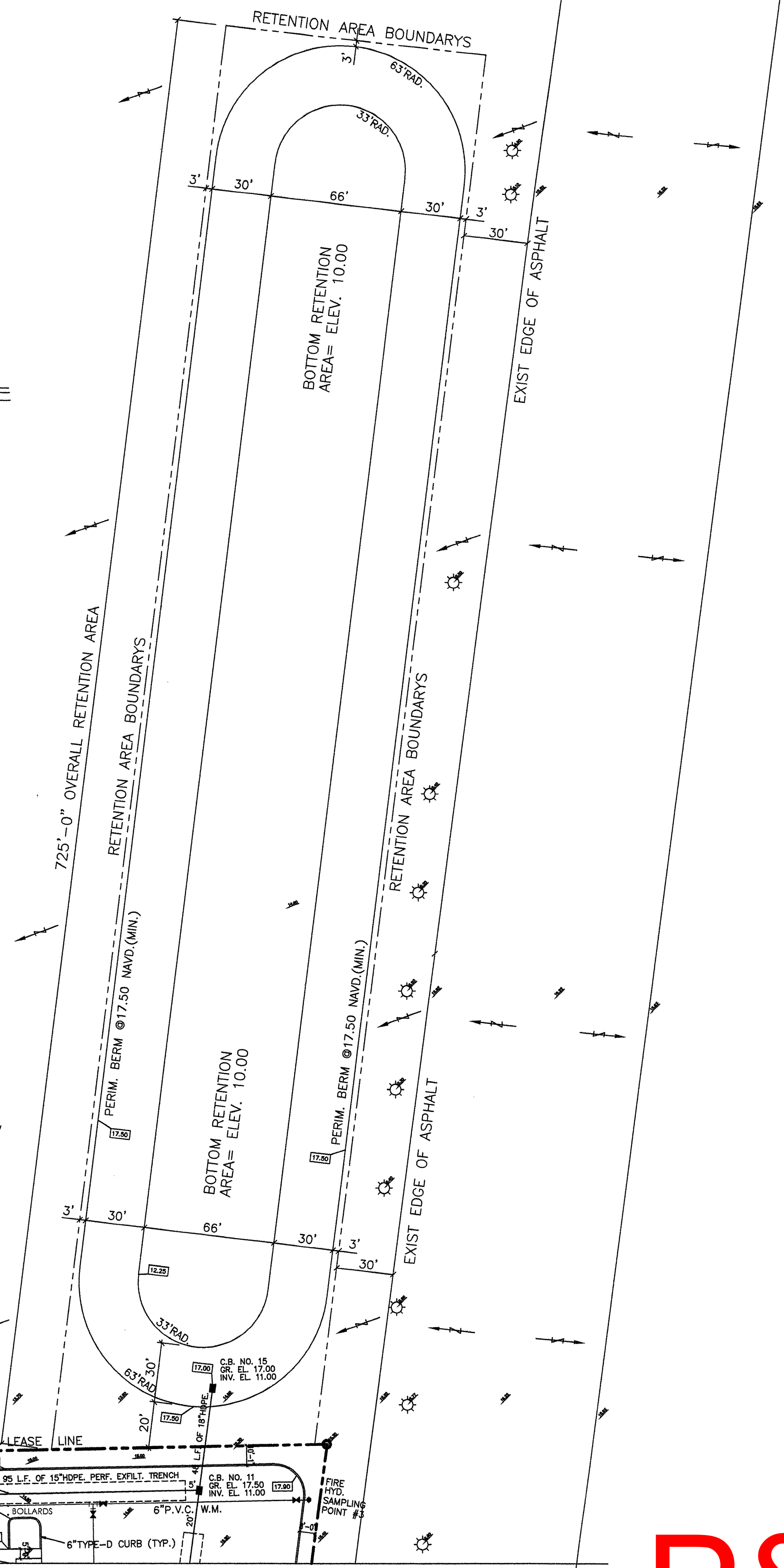
LOCATION SKETCH
SCALE: N.T.S.



This item has been Digitally Signed and Sealed by Charles O. Buckalew, FL. PE. # 24842 on October 14, 2022. Printed copies of this document are not considered signed and sealed and the signature must be verified on any electronic copies.



Charles Buckalew
Digitally signed by Charles Buckalew
Date: 2022.10.14 14:51:18 -04'00'



006 PAVING, GRADING & DRAINAGE PLAN

REVISIONS	BY
07-06-2022, REVISED PGD PLAN	COB
08-10-2022, REVISED PGD PLAN	COB
08-12-2022, REVISED PGD PLAN	COB
10-12-2022, REVISED PGD PLAN	COB

SITE IMPROVEMENT PLANS FOR
POMPANO BEACH AIR PARK - PARCEL Y
1520-1580 NE 5th AVENUE, POMPANO BEACH, FLORIDA 33060

Charles O. Buckalew
Consulting Engineering Services, Inc.
801 South Ocean Drive, Suite 201
Hollywood, Florida 33019
C.O.A. Number: 6255
Tele: (954) 558-1189 Fax: (954) 929-8988



DATE	11/16/2022
SCALE	1"=40.00'
PROJECT	PZ22-12000029
DATE	11/16/2022

P&Z
11/16/2022